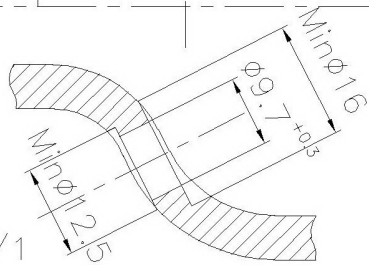
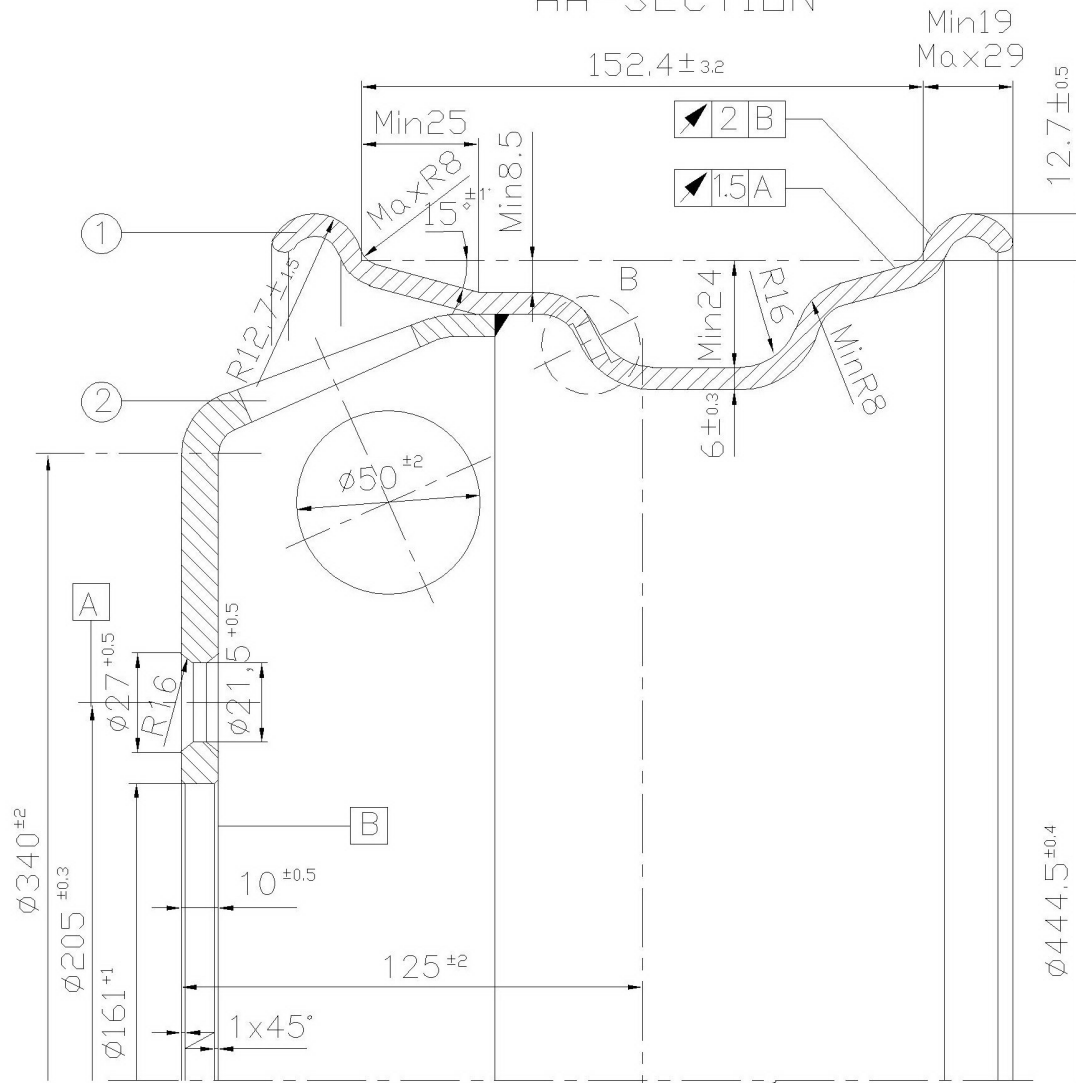
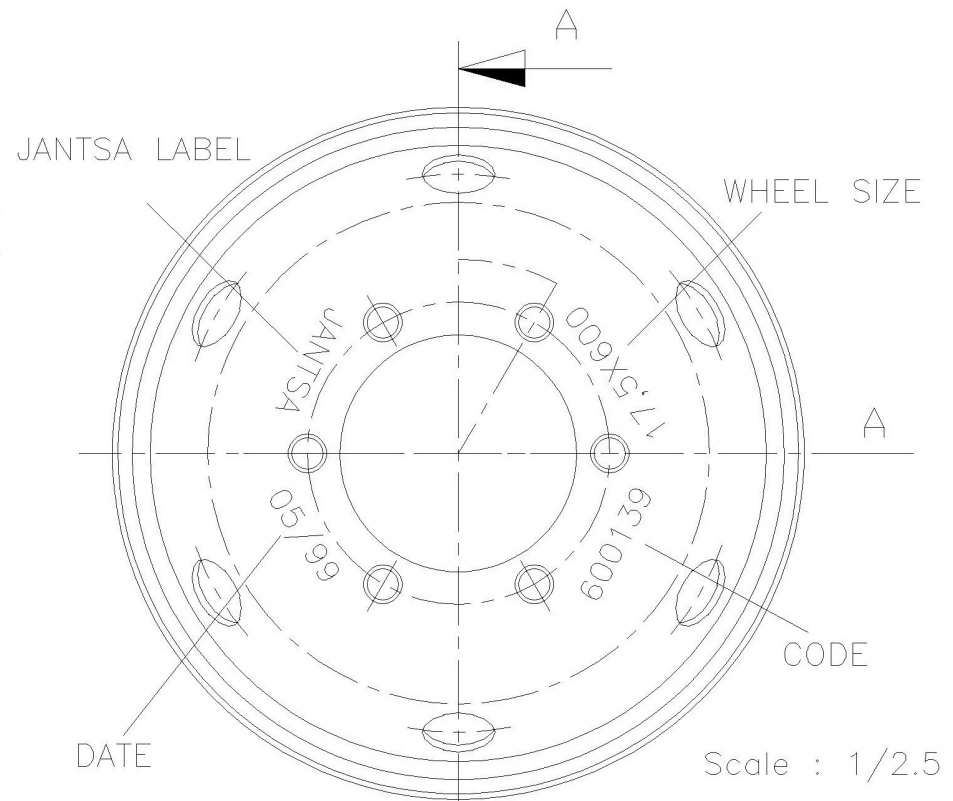


# AA-SECTION



B Detail  
Scale : 2/1

Scale : 1/1



Scale : 1/2.5

This wheel accomplishes all norms of European Tyre and Rim Technical Association E.T.R.T.O. All tolerances applied according to DIN 78022 Test procedure is same as SAE 267 Test values wheel load cap2050 Kg Slr 8R 17.5 Tyre Static load dia.444.5mm Max.unbalance=100g Rec.speed 100 Km/h Rec/Tyre pressure 6.0bar Reccommended valve V3.20.4

PART NO		METARIAL		JANTSA A.S.
1.RIM		ERDEMIR 3936		
2.DISC		ERDEMIR 3936		
	NAME	SIGN	DATE	DRAW NO 600139
ART.	M.KARADELI		04.05.99	
CONT.	G. KOC		04.05.99	
APP.	S.KORKMAZ		04.05.99	
SCALE	17.5X6.00			
1/11/2.5 2/1				